

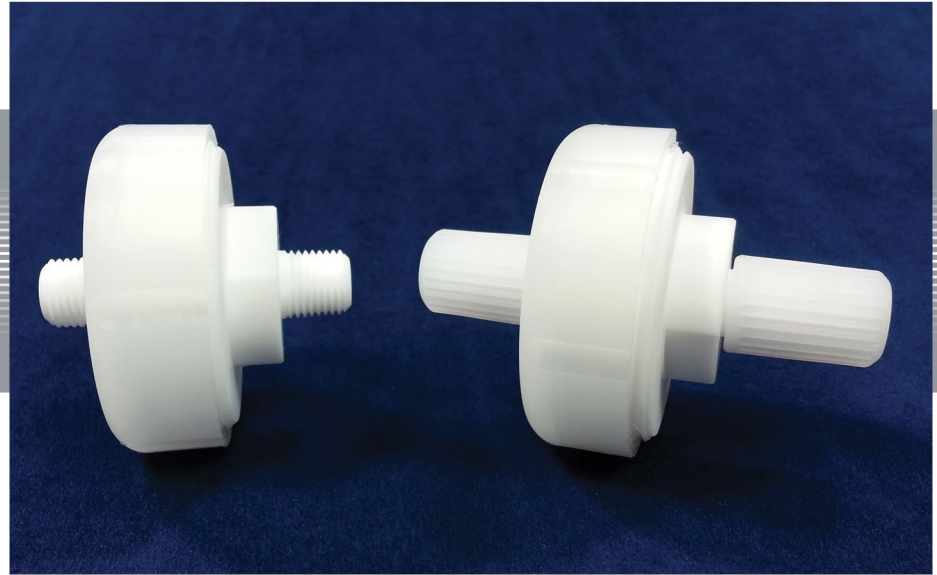


international polymer solutions

Teflon Disc Filter

The **IPS Teflon Disc Filter (TDF)** has been designed to fulfill the special requirements of inline microfiltration for sensitive medias. All contact surfaces are constructed so that nothing but PTFE comes into contact with the media being filtered. The Disc Filter utilizes replaceable Zitex™ filter elements which form a continuous mat of PTFE fibers. These fibers are fused together to form

a screen-like membrane structure. The resultant membrane is hydrophobic and hence aqueous suspensions must be filtered at high rates to overcome surface tension. Because of the non-stick characteristics of PTFE, the natural lubricity of all wetted surfaces, and the easy replacement of filter elements, entrapped contaminants may be easily removed.



Specifications:	
Pressure Rating	0 - 60 psi
Temperature Rating	
Ambient	32°F - 160°F (0°C - 72°C)
Media	0°F - 260°F (-18°C - 127°C)

PTFE Zitex Disc Filter	Size	Nominal Pore (MICRONS)
Ultra Fine Zitex PTFE Disc Filter	47mm	1.5
Fine Zitex PTFE Disc Filter	47mm	4.5
Medium Zitex PTFE Disc Filter	47mm	15
Course Zitex PTFE Disc Filter	47mm	25



P/N	DESCRIPTION	INLET/OUTLET
TDF-47-XXX-4T	Filter Assembly 47mm (1.85)	1/4 Tube
TDF-47-XXX-4FP	Filter Assembly 47mm (1.85)	1/4 FNPT
TDF-47-XXX-4MP	Filter Assembly 47mm (1.85)	1/4 MNPT
TDF-47-XXX-4FF	Filter Assembly 47mm (1.85)	1/4 Flared

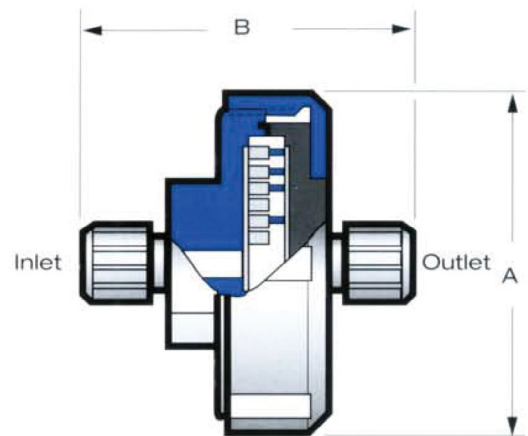
NOTE: "-XXX" REPRESENTS THE LAST 3 DIGITS OF THE FILTER MEMBRANE PART NUMBER.

EXAMPLE: FOR 1/4 FNPT ASSEMBLY WITH FM104 MEMBRANE. THE P/N IS: TDF-47-104-4FP

IPS NO.	Max. Function Pore Size (microns)	Nominal Thickness	Flow Rates			Initiation Pressure for Water	Ethanol Bubble Point	Approx. Pore Vol.	Pore Density
			Water*		Air**				
			in	A	B				
G-110	1 - 2	0.010	20 - 30	80 - 120	5 - 6	5.5 - 6.5	1.00 - 1.40	40	Ultra Fine
G-108	3 - 5	0.008	30 - 50	120 - 200	4 - 5	3.5 - 4.5	0.80 - 1.20	45	Fine
A-145	10 - 20	0.0045	30 - 80	120 - 320	1.50 - 2.50	.90 - 1.8	0.40 - 0.70	65	Medium
A-135	20 - 30	0.005	110 - 155	440 - 620	.40 - .70	.60 - 1.2	0.25 - 0.40	65	Coarse

*Water Flow Rate: A = Gallons/minute/ft2 @ 13.5 psi., B = MI/minute/cm2 @70 cmHg.
 **Air Flow Rate: G-Series = 100 cc/1.0 in²/20 oz. (Gurley Test), A-Series = 100cc/1.0 in²/@Δ P 0.176 psi (Gurley Test).
 Pressure differential necessary to overcome hydrophobic and internal resistance.
 Data shown is representative and not to be used as material specifications.

SIZE	A	B
4T	2.50	2.17
4FP	2.50	2.29
4MP	2.50	2.29
4FF	2.50	3.17



Zitex™ is the registered trademark of Saint-Gobain.

IPS Product Notes:

1. Please email Customer Service at info@ipolymer.com
2. Call us for special applications. We can manufacture our Disc Filters with special mounting and interface dimensions.
3. Upon request, alternate material selection from those listed will allow for expanding temperature ratings or other performance characteristics.
4. Unauthorized disassembly of this product will void the original factory one-year product warranty. For further details please contact your local Distributor or our factory directly.