



international polymer solutions

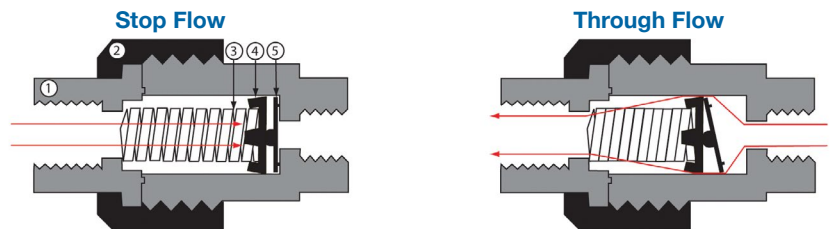
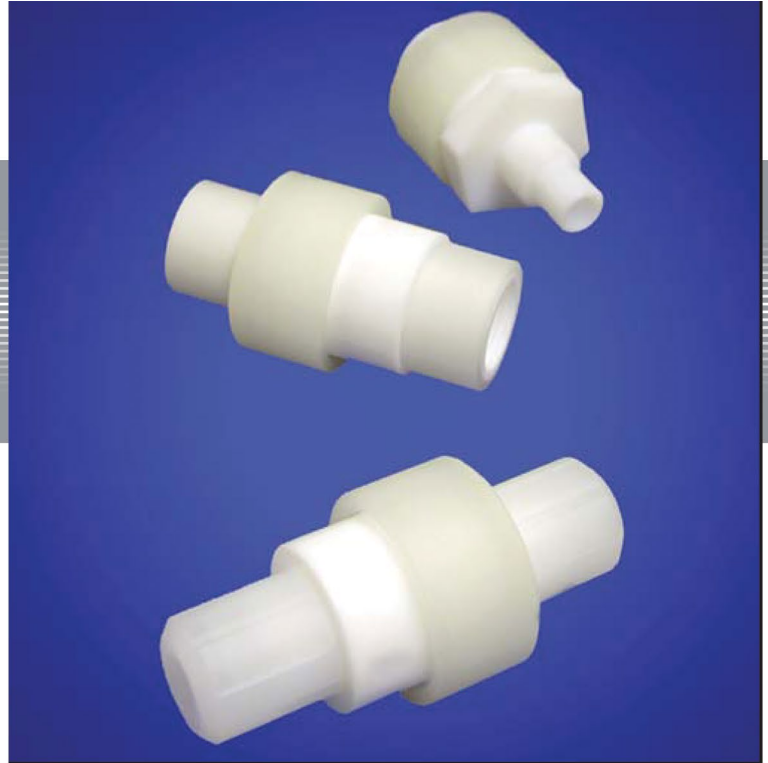
Check Valves

Our **IPS Check Valve** feature all PTFE wetted surfaces for excellent performance in all high purity applications. Our PTFE design resists chemical corrosion and other elements within a harsh process environments.

IPS Check Valves are commonly found as backflow preventers in clean processes. They are a simple and ideal device where directional flow control is a must.

Depending on the check valve size selected and cracking pressure, some external non-wetted components may include Polypropylene or PVDF. The special internal control spring for 3 psi to 6 psi (nominal 5 psi) cracking pressure is machined virgin PTFE for the 1/8" to 1/2" units. Whereas, for higher cracking pressures the spring construction is doubled Teflon Coated 316 Stainless Steel precision ground.

Please contact us with your special application requirements. Special PEEK, PVDF and Polypro configurations are available upon request.

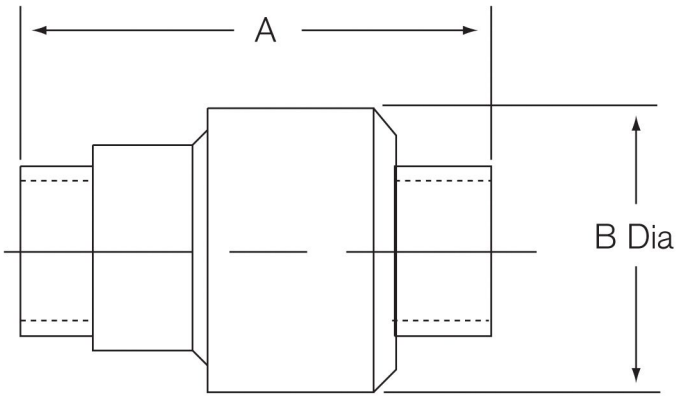


- 1. Body
- 2. Nut
- 3. Spring
- 4. Diffuser
- 5. Poppet

Specifications

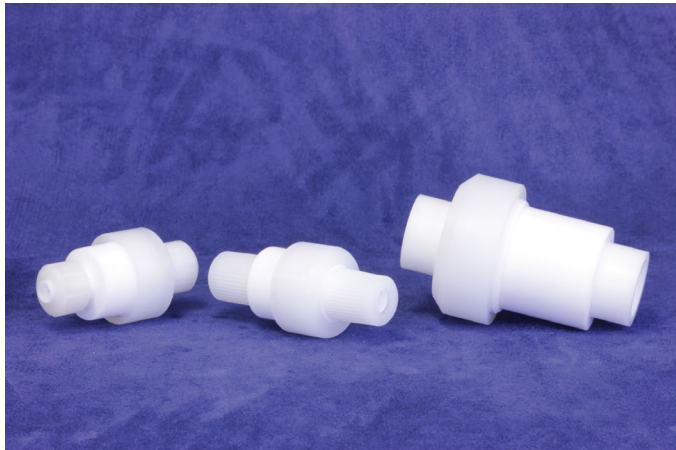
	- 5	- 10	- 20
Cracking Pressure	3 - 6 psi	7 - 13 psi	17- 23 psi
Max Operating Pressure	50 psi	50 psi	50 psi
Media Temperature	230° F / 110° C	230° F / 110° C	230° F / 110° C
Ambient Temperature	140° F / 60° C	140° F / 60° C	140° F / 60° C
Spring	1/8" - 1/2" PTFE 3/4" - 1" 316 SS Teflon Coated	316 Stainless Steel Teflon Coated	316 Stainless Steel Teflon Coated





Custom configurations are available

Inlet & Outlet Port Size	Dim A			B
	PIPE	TUBE	FLARE	
1/8"	2.08	2.86	-	1.25
1/4"	2.44	3.01	3.60	1.25
3/8"	2.74	3.34	4.02	1.75
1/2"	3.12	3.52	4.22	1.75
3/4"	4.57	5.31	6.07	2.76
1"	4.95	5.75	6.57	2.76



Check Valve: ORDERING FORMAT



Cracking Pressure
 05 = 3 psi to 6 psi
 10 = 7 psi to 13 psi
 20 = 17 psi to 23 psi

End Connection
 P = FNPT
 T = Tube
 F = Flared
 M = MNPT

	Orifice & Port Size		
	PIPE	TUBE	FLARE
2-2	.125" Orifice & 1/8" NPT	.063" Orifice & 1/8" Tube	-
4-4	.250" Orifice & 1/4" NPT	.188" Orifice & 1/4" Tube	.125" Orifice & 1/4" Flare
6-6	.375" Orifice & 3/8" NPT	.313" Orifice & 3/8" Tube	.250" Orifice & 3/8" Flare
8-8	.500" Orifice & 1/2" NPT	.436" Orifice & 1/2" Tube	.375" Orifice & 1/2" Flare
12-12	.750" Orifice & 3/4" NPT	.688" Orifice & 3/4" Tube	.592" Orifice & 3/4" Flare
16-16	1.00" Orifice & 1" NPT	.938" Orifice & 1" Tube	.875" Orifice & 1" Flare

IPS Product Notes:

1. Please email Customer Service at info@ipolymer.com
2. Call us for special applications.
3. Upon request, alternate material selection from those listed will allow for expanding temperature ratings or other performance characteristics.
4. Unauthorized disassembly of this product will void the original factory one-year product warranty. For further details please contact your local Distributor or our factory directly.