

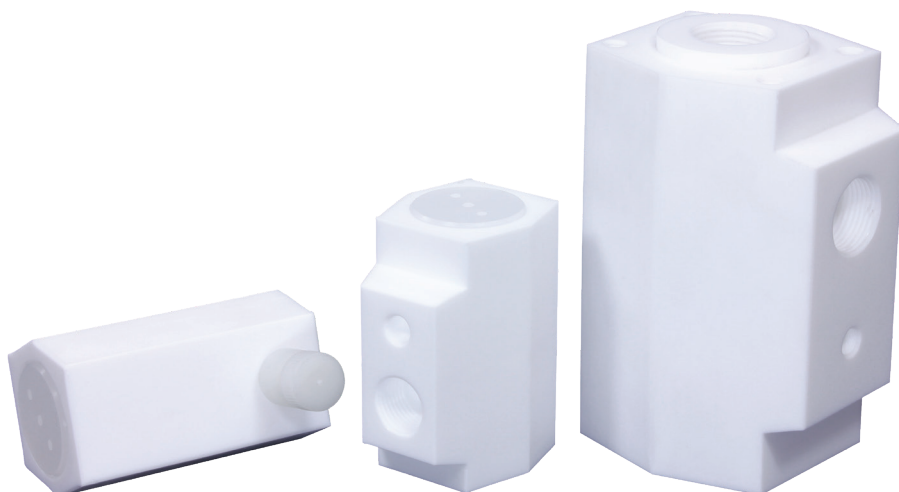
iPolymer | PTFE Pneumatic Valves

PTFE Pneumatic Valves

PTFE Pneumatic Valve (TP Valve) features an all PTFE wetted surface design. The design is ideal for harsh chemical and corrosive media and environments. PTFE is well suited for clean room and deionized water applications.

Highlights

- One-piece PTFE body
- Optimum anti-corrosion design
- High-temp version with PVDF components is available
- Complete media isolation



Applications

- Chemical Neutralization
- Chemical Delivery
- DI Water Rinse
- Wafer Etching
- Acid Parts Cleaning
- Phosphoric Acid Nitride Removal
- Sulfuric Peroxide Stripping
- Potassium Hydroxide Etching

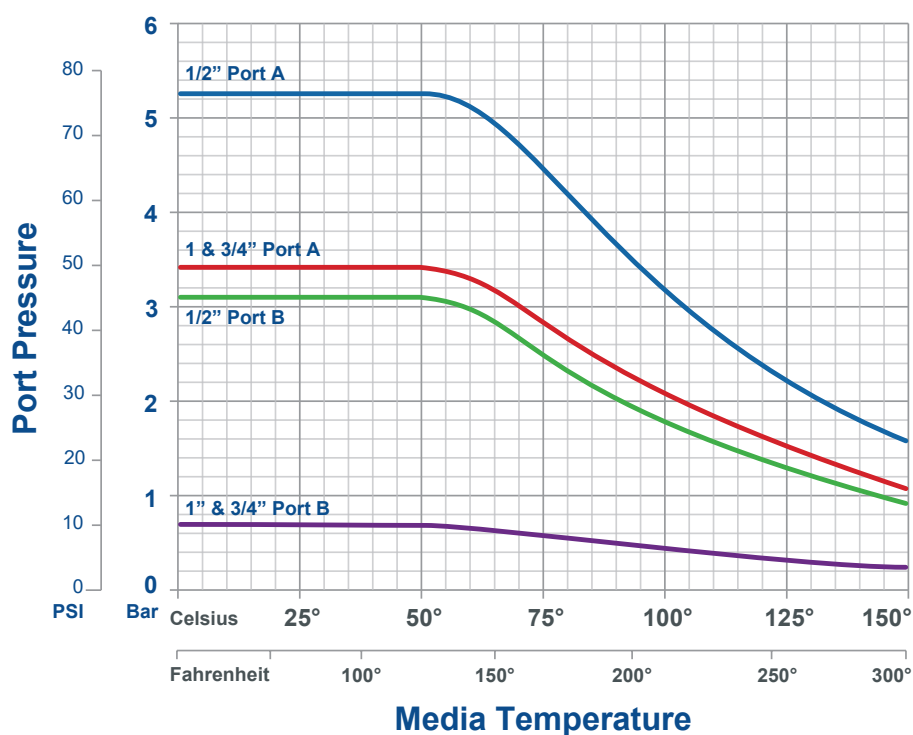
Specifications

Materials			
Body	PTFE		
Bellows/Poppet	PTFE		
Backing Plate	PTFE		
Piston	Polypropylene		
Cap	Polypropylene		

Orifice Size	1/2"	3/4"	1"
Cv	2.2	2.8	7.5
Port A Max. Pressure (psi)	75	50	50
Port B Max. Pressure (psi)	45	10	10
Actuator Pressure Range (psi)	50 - 80	50 - 80	50 - 80
Max. Media Temperature	212° F / 100°C HT 300°F / 149°C		

Specifications are for both normally-open and normally-closed configurations. See Pressure vs. Temperature graph for full range. Port C reference for 3-Way only.

Performance



Ordering Format

TP - 2W - 8 P - XX - RC
 0 1 2 3 4 5

0. Valve Series

TP = PTFE Pneumatic Valve

1. Valve Configuration

2W = 2-Way

2. Ports / Orifice Size

8 = 1/2"

12 = 3/4"

16 = 1"

3. Port Connection

P = Female Pipe (FNPT)

4. Port Configuration

For 2-Way:

C = 2-Way Normally Closed

O = 2-Way Normally Open

5. Flow Options

RC = Restricted Closure

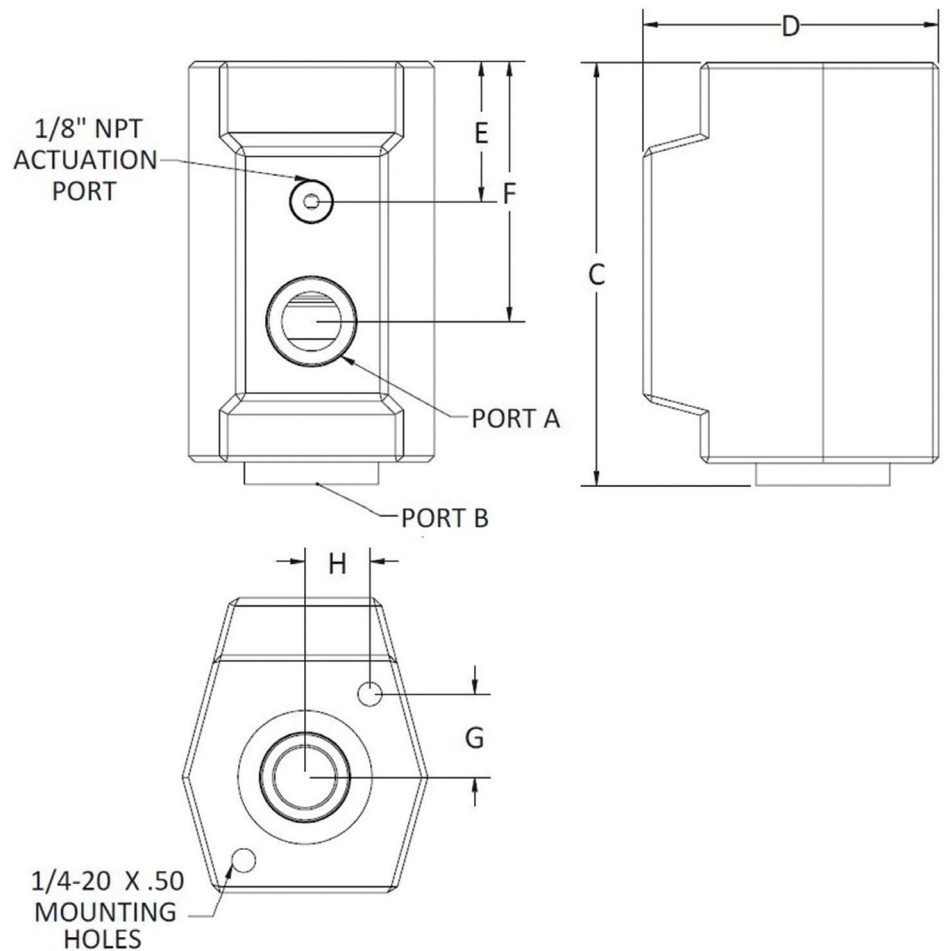
RO = Restricted Open

AB = Anti-Bacteria Feature (MAH)

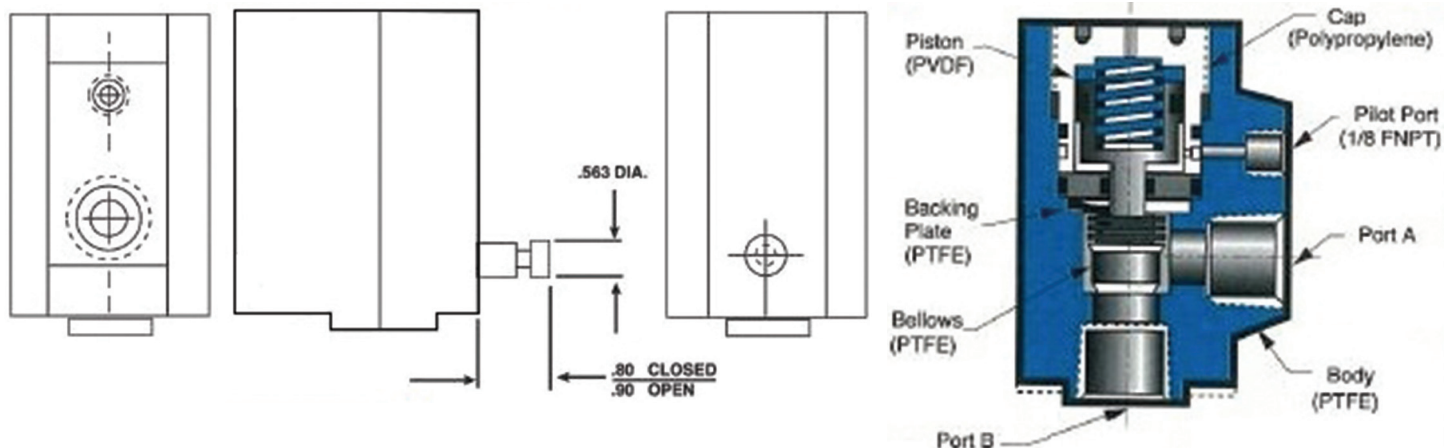
MA = Micro Adjust Feature

*Restrictive Flow options are only available for Normally Closed valves.

Port A, B	C	D	E	F	G	H
1/4"	3.56	2.48	1.18	2.19	0.70	0.53
3/4"	5.61	3.56	1.94	3.65	1.21	0.85
1"	5.61	3.56	1.94	3.65	1.21	0.85



AB Option



iPolymer Product Notes:

1. Please email Customer Service at info@ipolymer.com
2. Call us for special applications. We can manufacture our Valves with special mounting and interface dimensions.
3. Alternate materials are available that may allow for expanding temperature ratings or other performance characteristics.
4. Unauthorized disassembly will void the original factory one-year product warranty. Contact us or your Distributor for details.