

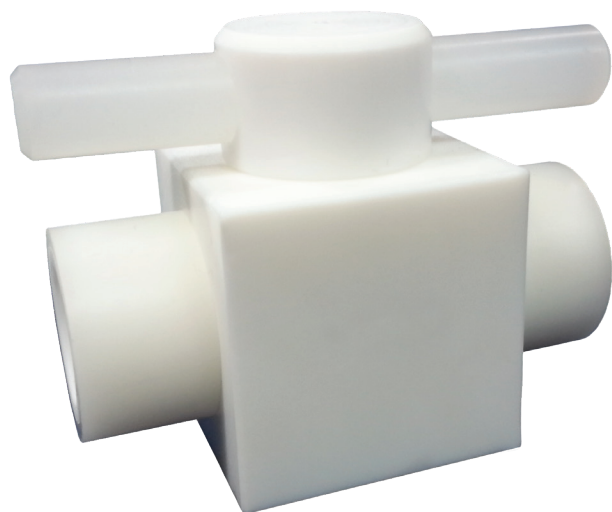
iPolymer | Stopcock Valves

Stopcock Valves

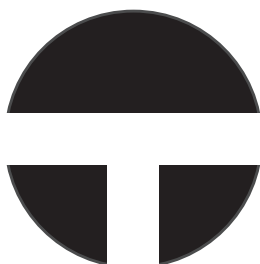
Stopcock Valves are precision machined devices that function in much the same way as a ball valve. When the handle points in the direction of flow, the valve is fully open; when the handle points perpendicular to the direction of flow, the valve is fully closed; and at the 45° position the valve is halfway open and thereby has a metering effect on the media flow.

iPolymer Stopcocks feature an all PTFE wetted surface design that is ideal for harsh chemical and corrosive media. PTFE is also well suited to clean room environments and deionized water applications.

The body, stem and ports are constructed from PTFE. For standard applications, external non-wetted components are constructed from Polypropylene. All configurations are optionally available as Panel Mounted and/or High Ambient Temperature models.

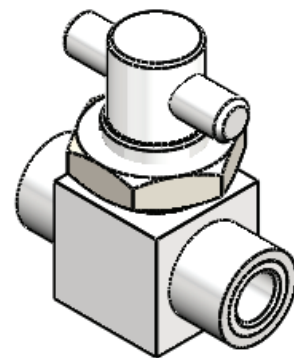
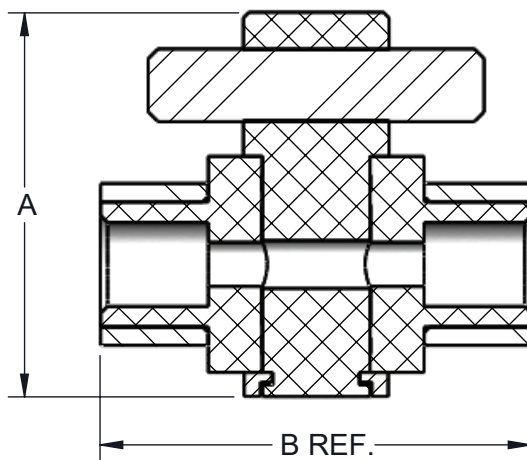
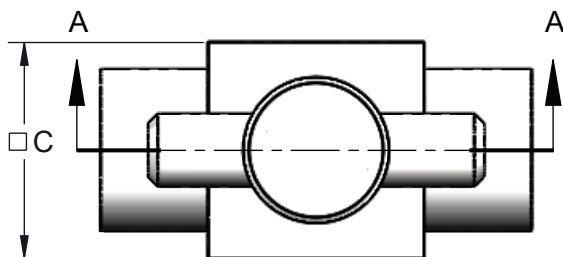


Valve Stem Options



Type -T
3-way

Dimensions



PANEL MOUNT OPTION

Specifications

Media Pressure (psi)	60
Media temperature	100° C / 212° F
Ambient temperature	60° C / 140° F
Wetted Surfaces	Virgin PTFE

Part	Port Size (in)	Port Type	Configuration	Orifice (in)	Stem Type	Mount	Hard Stop	A	B	C	PM Hole Size	Max. Panel Thickness
SC-403	1/8	Tube	2-WAY	0.09	N/A	Standard	N/A	1.63	1.76	1.00	0.70	0.30
SC-500	1/4	FNPT	2-WAY	0.23	N/A	Standard	N/A	2.00	2.25	1.13	0.90	0.30
SC-507-T-P	1/4	Flare	3-WAY	0.13	T	Panel Mount	N/A	2.00	2.25	1.69	0.90	0.30
SC-600	3/8	FNPT	2-WAY	0.28	N/A	Standard	N/A	2.13	2.62	1.50	1.03	0.43
SC-700	1/2	FNPT	2-WAY	0.44	N/A	Standard	N/A	2.33	3.25	1.88	1.40	0.43
SC-712-P-HS	1/2	FNPT	2-WAY	0.44	N/A	Panel Mount	1/4 Turn	3.33	3.25	1.88	1.40	0.43

HS = 1/4-Turn Hard Stop. Add ~3/8" per port for Flared Connections.