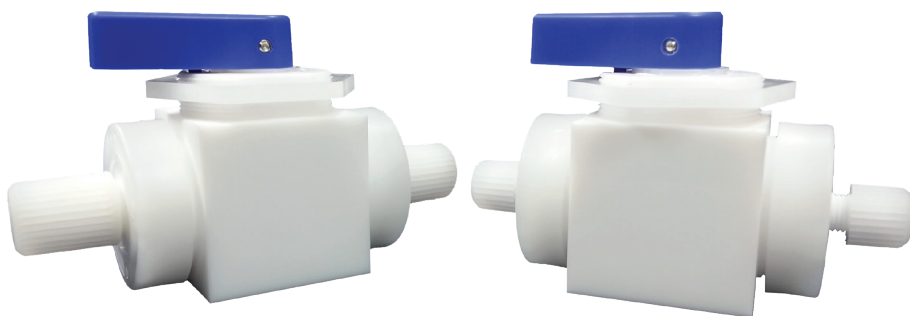


iPolymer | Ball Valve

Ball Valve

Ball Valve features an all PTFE wetted surface design. The design is ideal for harsh chemical and corrosive media applications. PTFE is also well suited to clean room and deionized water applications. The body, stem, ball and ports are constructed from PTFE. For standard applications, external non-wetted components are constructed from Natural PVDF and Polypropylene.



Highlights

- PTFE construction for media wetted surfaces
- Reliable low torque manual operation
- Quarter-turn with positive stops
- Design accommodates partial open position for metered flow
- All models can be panel mounted
- All models can be used in high ambient temperature environments

Specifications

Standard Port Sizes (in) 1/4, 3/8, 1/2, 3/4, or 1

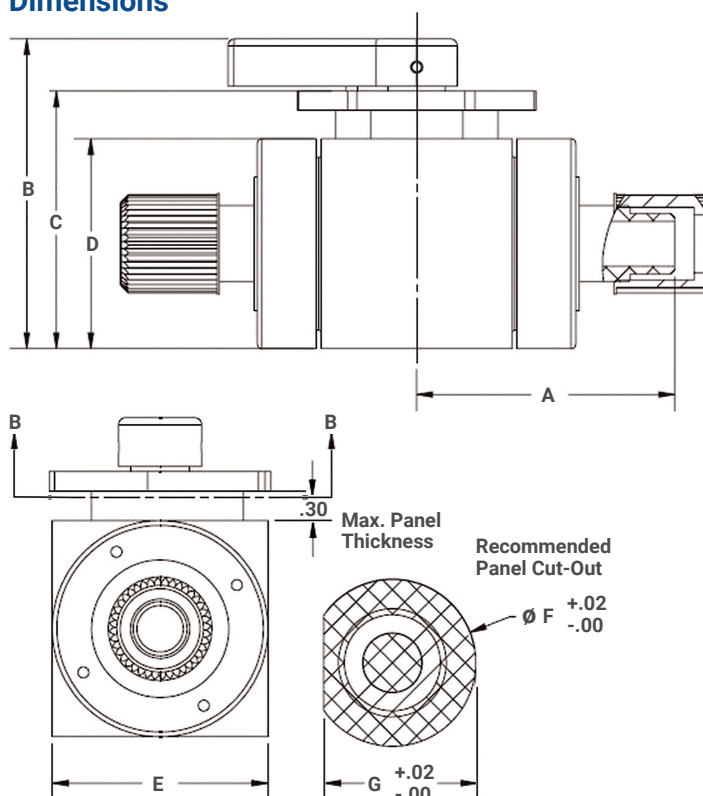
Connection Types FNPT or Nexus

Max. Media Operating Pressure (psi) 120
25 in Hg vacuum

Media Operating Temperature Range 32 - 212°F
(0 - 100°C)

Ambient Temperature Range 32 - 140°F
(0 - 60°C)

Dimensions



Part	Port Size (in)	End Connection	Dim A	Dim B	Dim C	Dim D	Dim E	Dim F	Dim G
BV-44-P	1/4	FNPT	1.62	3.18	2.50	2.00	2.00	1.82	1.69
BV-44-N	1/4	Nexus							
BV-66-P	3/8	FNPT	1.62	3.18	2.50	2.00	2.00	1.82	1.69
BV-66-N	3/8	Nexus							
BV-88-P	1/2	FNPT	1.62	3.18	2.50	2.00	2.00	1.82	1.69
BV-88-N	1/2	Nexus							
BV-1212-P	3/4	FNPT	2.13	4.06	3.38	2.75	2.75	2.13	1.94
BV-1212-N	3/4	Nexus							
BV-1616-P	1	FNPT	2.13	4.06	3.38	2.75	2.75	2.13	1.94
BV-1616-N	1	Nexus							

Nexus connections are Pillar S-300 Compatible